



# QC Report: Yeastern Labs Aug 2004

- I) YB Real Genomics™ Kits are equivalent or superior to market leader Brand Q in YIELD
- ii) YB Real Genomics™ Kits are equivalent to market leader Brand Q in PURITY
- iii) YB Real Genomics™ Kits show very low VARIATION lot-to-lot



Note: YB Real Genomics DNA/RNA extraction kits were formerly known as Geneaid in some areas.  
 YB Real Genomics provide high quality kits for all popular DNA/RNA extractions at the world's best prices.

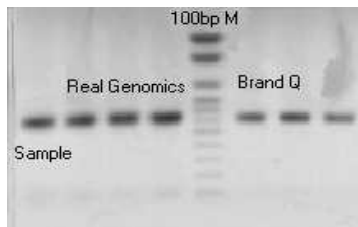
a) **HiYield Plasmid Mini Kit:** Yield, Purity and Stability Test Each Sample Tested 3X

<b>Real Genomics™</b>	<b>DH5α/TA</b>			<b>BL21/pET20b</b>		
Volume(λ)	43	44	44	44.5	44.5	43.5
DNA conc.(ng/λ)	139.4	115.8	123.5	19.7	18.7	18
total DNA(μg)	5.99	5.01	5.43	0.88	0.83	0.78
A <sub>260</sub> /A <sub>280</sub>	1.92	1.91	1.91	1.78	2.03	1.82
<b>Brand Leader Q</b>	<b>DH5α/TA</b>			<b>BL21/pET20b</b>		
Volume(λ)	44.5	44.5	45	46	44	45
DNA conc.(ng/λ)	112.2	100.8	105.7	20.6	24.8	19.9
total DNA(μg)	4.99	4.49	4.76	0.95	1.09	0.9
A <sub>260</sub> /A <sub>280</sub>	1.91	1.9	1.89	1.72	1.72	1.84

b) **HiYield Gel/PCR Extraction Kit:** Yield, Purity and Stability Test Each Sample Tested 3X

<b>Real Genomics™</b>	<b>PCR product</b>			<b>Gel Extraction</b>		
Volume(λ)	35.5	36.5	35	43	44.5	41
DNA conc.(ng/λ)	69.8	66.6	71.3	25.2	24.5	36.2
total DNA(μg)	2.48	2.43	2.5	1.08	1.1	1.48
A <sub>260</sub> /A <sub>280</sub>	1.85	1.97	1.86	1.8	1.7	1.88
<b>Brand Leader Q</b>	<b>PCR product</b>			<b>Gel Extraction</b>		
Volume(λ)	37	37	37	46	46	46
DNA conc.(ng/λ)	48.8	62.2	50.4	13.9	17.6	18.2
total DNA(μg)	1.81	2.3	1.86	0.64	0.81	0.84
A <sub>260</sub> /A <sub>280</sub>	1.63	1.63	1.66	1.74	1.79	1.83

Fig.1: HiYield Plasmid Extraction



Comparison: % Recovery

Figure 1/2

3 X Samples  
 Lane 1: Sample  
 Lane 2-4: Real Genomics™  
 Lane 6-8: Brand Leader Q

Fig.2: HiYield Gel/PCR Extraction

