



QC Report: Yeastern Labs Aug 2004

- I) RBC Real Genomics™ Kits are equivalent or superior to market leader Brand Q in YIELD
- ii) RBC Real Genomics™ Kits are equivalent to market leader Brand Q in PURITY
- iii) RBC Real Genomics™ Kits show very low VARIATION lot-to-lot



a) **HiYield Plasmid Mini Kit:** Yield, Purity and Stability Test

Each Sample Tested 3X

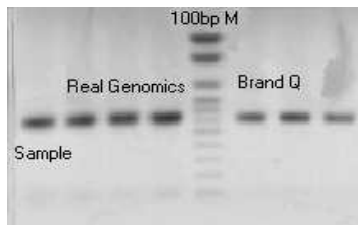
Real Genomics™	DH5α/TA			BL21/pET20b		
Volume(λ)	43	44	44	44.5	44.5	43.5
DNA conc.(ng/λ)	139.4	115.8	123.5	19.7	18.7	18
total DNA(μg)	5.99	5.01	5.43	0.88	0.83	0.78
A ₂₆₀ /A ₂₈₀	1.92	1.91	1.91	1.78	2.03	1.82
Brand Leader Q	DH5α/TA			BL21/pET20b		
Volume(λ)	44.5	44.5	45	46	44	45
DNA conc.(ng/λ)	112.2	100.8	105.7	20.6	24.8	19.9
total DNA(μg)	4.99	4.49	4.76	0.95	1.09	0.9
A ₂₆₀ /A ₂₈₀	1.91	1.9	1.89	1.72	1.72	1.84

b) **HiYield Gel/PCR Extraction Kit:** Yield, Purity and Stability Test

Each Sample Tested 3X

Real Genomics™	PCR product			Gel Extraction		
Volume(λ)	35.5	36.5	35	43	44.5	41
DNA conc.(ng/λ)	69.8	66.6	71.3	25.2	24.5	36.2
total DNA(μg)	2.48	2.43	2.5	1.08	1.1	1.48
A ₂₆₀ /A ₂₈₀	1.85	1.97	1.86	1.8	1.7	1.88
Brand Leader Q	PCR product			Gel Extraction		
Volume(λ)	37	37	37	46	46	46
DNA conc.(ng/λ)	48.8	62.2	50.4	13.9	17.6	18.2
total DNA(μg)	1.81	2.3	1.86	0.64	0.81	0.84
A ₂₆₀ /A ₂₈₀	1.63	1.63	1.66	1.74	1.79	1.83

Fig.1: HiYield Plasmid Extraction



Comparison: % Recovery

Figure 1/2

3 X Samples
 Lane 1: Sample
 Lane 2-4: Real Genomics™
 Lane 6-8: Brand Leader Q

Fig.2: HiYield Gel/PCR Extraction

